



# 2019 Kobe University STUDY PROGRAM

Program Coordination Section, Center for International Education

## ***Gateway to Kobe University***

This program is designed for undergraduate and graduate students who are interested in Japan. It provides a wide range of educational opportunities, such as studying Japanese, experiencing top-level education through classes provided by the faculties of Kobe University, enjoying the campus life, and taking part in fieldwork to study Japanese culture, history and business. This is a high quality, in-depth program that we strongly recommend for students who want to study seriously in Japan.



## Program Overview

**Duration :** July 15 (Mon.) ~ July 27(Sat.), 2019

**Number of Participants :** 25 students

### Eligibility :

Undergraduate and graduate school students who are interested in Japan  
Sufficient English ability (The program is taught entirely in English.)

※ No Japanese language requirement

### Contents of the Program :

- Intensive Japanese language courses (Elementary, Intermediate)
- Lectures
- Campus life experience at Kobe University
- Field trips to historically and culturally important sites
- Certificate Issuance

### Program Participation Fee : 250,000 JPY

Costs included in the program expense:

- Accommodation
- Transportation to / from airport
- Field trips
- Meals (breakfast, welcome lunch, farewell dinner)
- Class fees and learning materials

### Insurance :

All participants are required to purchase overseas travelers' insurance that covers illness / injury / liability and any other necessary expenses.

### How to apply : Please refer to the URL below for detailed information.

<http://www.office.kobe-u.ac.jp/intl-prg/short-term/how-to-apply.html>

Step 1 : Complete the online registration through the URL by April 18, 2019.

Step 2 : Submit the required documents below to the Program Coordination Section office [intl-prg@office.kobe-u.ac.jp](mailto:intl-prg@office.kobe-u.ac.jp) by April 19, 2019

- Written Oath
- Letter of Recommendation by your supervising professor
- Certificate of Enrollment of your university
- Personal Photo

### Selection Process :

Applications will be evaluated based on the submitted documents and online interview. Selection results will be sent by April 25, 2019. Further information, payment method included, will be provided to those who have been successfully accepted.

### Program URL

<http://www.office.kobe-u.ac.jp/intl-prg/short-term/>



# Program Schedule

Date	AM	PM
July 15 (Mon.)	Arrival	
July 16 (Tue.)	Opening Ceremony	Welcome Lunch Guided tour of Kobe University Campus Lecture/Seminar
July 17 (Wed.)	Field Trip (Kobe)	Lunch Special Lecture
July 18 (Thu.)	Japanese Class	Lunch Lecture / Seminar
July 19 (Fri.)	Japanese Class	Lunch Lecture / Seminar
July 20 (Sat.)	Field Trip (Kyoto)	
July 21 (Sun.)	Free Time	
July 22 (Mon.)	Japanese Class	Lunch Lecture / Seminar Discussion with exchange students
July 23 (Tue.)	Japanese Class	Lunch Training Ship Experience
July 24 (Wed.)	Japanese Class	Lunch Lecture / Seminar
July 25 (Thu.)	Task Based Assignment	Lunch Field Trip (Osaka)
July 26 (Fri.)	Special Lecture, "Work and study experience in Japan"	Closing Ceremony Lunch Japanese Hotel Experience / Farewell Dinner
July 27 (Sat.)	Departure	

Schedule and contents are subject to change without prior notice.

## Lectures :

(examples from the 2018 program)

Program - exclusive lectures

Law, Economics, Humanities, Engineering, International Cooperation Studies, and Urban Safety and Security

Experience in regular courses

Lecture by a former exchange student

## Filed Trips :

(examples from the 2018 program)

Fushimi Inari Taisha Shrine, Kiyomizu-dera Temple, Kinkakuji Temple, Himeji Castle, Akashi Kaikyo Bridge, NHK (Japan Broadcasting Corporation) Osaka branch, Riken Research Center, Disaster Reduction and Human Renovation Institute

## Training Ship Experience

Participants can experience sea training onboard the Kobe University training ship Fukae-maru.

## Japanese Hotel Experience

Participants spend a night at a traditional Japanese hotel with a hot spring and experience Japanese hospitality.



# Kobe University

Formally established in 1949, Kobe University is proud of its tradition as an education and research institution located in the cosmopolitan city of Kobe.

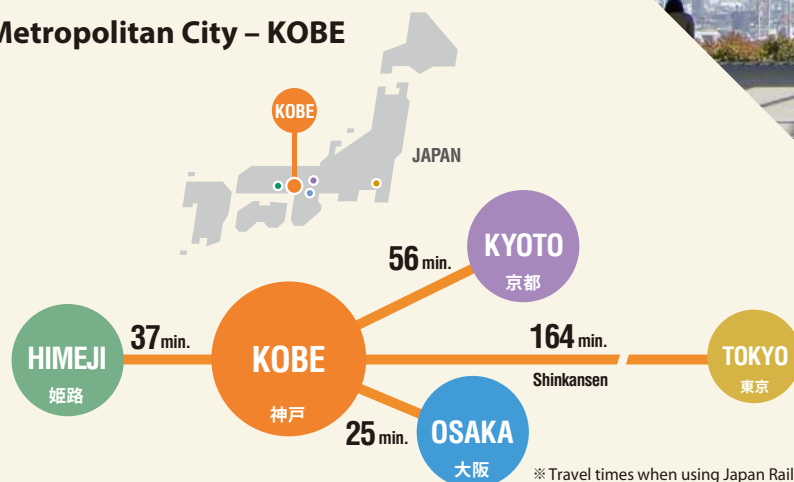
Kobe University is one of Japan's leading comprehensive universities with 10 faculties and schools, 15 graduate schools and a great number of research centers and institutions under four main academic areas: humanities, social sciences, natural sciences, and life sciences and medicine. As of May 1, 2018, there are approximately 1,300 international students studying at Kobe University.

Taking advantage of our traditional strengths in the social sciences combined with more recent initiatives across the natural and biomedical sciences, Kobe University is promoting interdisciplinary research and education as an outstanding research university.

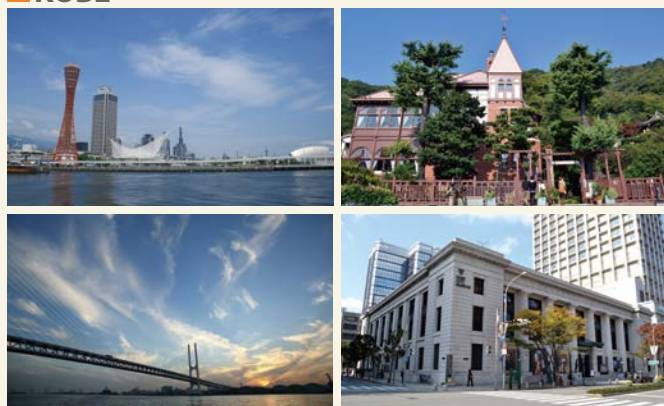
## Location

### Modern, Sophisticated and Fashionable Metropolitan City – KOBE

Located in the central part of Japan, Kobe is a port city blessed with rich natural surroundings and a warm climate. The city boasts views of the Setouchi Inland Sea with the beautiful Rokko mountain range in the background. Kobe has become one of Japan's most attractive and cosmopolitan cities with a sophisticated port flavor, an exotic town absorbing cultural diversity from overseas. You'll discover a wealth of history and culture in Kobe, especially in the Ijinkan Foreigners' Houses, Ikuta Shrine, Arima Onsen Hot Spring, the Sake Breweries in Nada, and the renowned Kobe Beef. It is also conveniently located for access to the greater Kansai area including Kyoto, Osaka and Nara.



#### KOBE



#### KYOTO



#### OSAKA



#### HIMEJI

